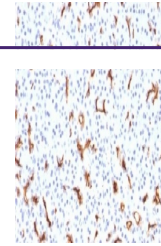


---

## Product Datasheet

### CFTR Antibody (orb1252177)

|                            |   |
|----------------------------|---|
| <b>Description</b>         | CFTR Antibody   |
| <b>Species/Host</b>        | Mouse   |
| <b>Reactivity</b>          | Human   |
| <b>Conjugation</b>         | Unconjugated  |
| <b>Tested Applications</b> | IF, IHC-P, WB   |
| <b>Immunogen</b>           | A partial recombinant protein corresponding to amino acids 258-385 from the human protein was used as the immunogen for this CFTR antibody.   |
| <b>Target</b>              | CFTR  |
| <b>Preservatives</b>       | PBS with 0.1 mg/ml rAlbumin and 0.05% sodium azide  |
| <b>Form/Appearance</b>     | Liquid  |
| <b>Concentration</b>       | 0.2 mg/mL   |
| <b>Storage</b>             | Aliquot and Store at 2-8°C. Avoid freeze-thaw cycles.   |
| <b>Note</b>                | For research use only   |
| <b>Application notes</b>   | IF: 0.5-1 ug/ml IHC (FFPE): 1-2 ug/ml for 30 min at RT The concentration stated for each application is a general starting point. Variations in protocols, secondaries and substrates may require the CFTR antibody to be titered up or down for optimal performance. |
| <b>Isotype</b>             | IgG2b   |
| <b>Clonality</b>           | Monoclonal  |
| <b>Uniprot ID</b>          | <a href="#">P13569</a>  |
| <b>Dilution Range</b>      | IF: 0.5-1 ug/ml IHC (FFPE): 1-2 ug/ml for 30 min at RT The concentration stated for each application is a general starting point. Variations in protocols, secondaries and substrates may require the CFTR antibody to be titered up or down for optimal performance. |
| <b>Expiration Date</b>     | 12 months from date of receipt.   |



IHC testing of FFPE human pancreas with ...



SDS-PAGE Analysis of Purified, BSA-Free ...