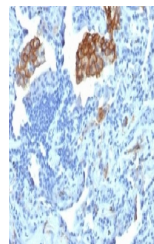


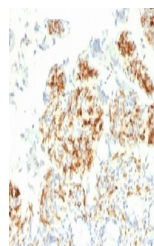
Product Datasheet

CD209 Antibody (orb1252171)

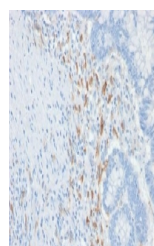
Description	CD209 Antibody
Species/Host	Mouse
Reactivity	Human
Conjugation	Unconjugated
Tested Applications	FC, IF, IHC-P, WB
Immunogen	A human partial recombinant protein was used as the immunogen for the DC-SIGN antibody.
Target	CD209
Preservatives	PBS with 0.1 mg/ml rAlbumin and 0.05% sodium azide
Form/Appearance	Liquid
Concentration	0.2 mg/mL
Storage	Aliquot and Store at 2-8°C. Avoid freeze-thaw cycles.
Note	For research use only
Application notes	IF: 1-2 ug/ml Flow Cytometry: 0.5-1 ug/million cells in 0.1ml IHC (FFPE): 0.5-1 ug/ml for 30 min at RT Titering of the DC-SIGN antibody may be required for optimal performance.
Isotype	IgG2b, kappa
Clonality	Monoclonal
Uniprot ID	Q9NNX6
Dilution Range	IF: 1-2 ug/ml Flow Cytometry: 0.5-1 ug/million cells in 0.1ml IHC (FFPE): 0.5-1 ug/ml for 30 min at RT Titering of the DC-SIGN antibody may be required for optimal performance.
Expiration Date	12 months from date of receipt.



IHC testing of FFPE human lung carcinoma...



IHC testing of FFPE human small intestine...



IHC testing of FFPE human colon carcinoma...