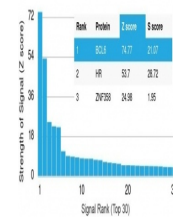


## Product Datasheet

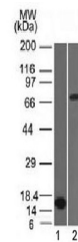
### BCL6 Antibody (orb1252154)

<b>Description</b>	BCL6 Antibody
<b>Species/Host</b>	Mouse
<b>Reactivity</b>	Human
<b>Conjugation</b>	Unconjugated
<b>Tested Applications</b>	FC, IF, WB
<b>Immunogen</b>	Amino acids 256-389 were used as the immunogen for the Bcl6 antibody.
<b>Target</b>	BCL6
<b>Preservatives</b>	PBS with 0.1 mg/ml rAlbumin and 0.05% sodium azide
<b>Form/Appearance</b>	Liquid
<b>Concentration</b>	0.2 mg/mL
<b>Storage</b>	Aliquot and Store at 2-8°C. Avoid freeze-thaw cycles.
<b>Note</b>	For research use only
<b>Application notes</b>	Flow Cytometry: 0.5-1 ug/million cells in 0.1ml Immunofluorescence: 1-2 ug/ml Western blot: 0.5-1 ug/ml Optimal dilution of the Bcl6 antibody should be determined by the researcher.
<b>Isotype</b>	IgG1, kappa
<b>Clonality</b>	Monoclonal
<b>Uniprot ID</b>	<b>P41182</b>
<b>Dilution Range</b>	Flow Cytometry: 0.5-1 ug/million cells in 0.1ml Immunofluorescence: 1-2 ug/ml Western blot: 0.5-1 ug/ml Optimal dilution of the Bcl6 antibody should be determined by the researcher.
<b>Expiration Date</b>	12 months from date of receipt.

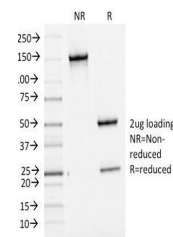
Human Protein Microarray Specificity Validation



Analysis of HuProt(TM) microarray contain...



Western blot testing of 1) partial recombinant BCL6 antibody.



SDS-PAGE Analysis of Purified, BSA-Free ...