
Product Datasheet

BCL6 Antibody (orb1252153)

Description

BCL6 Antibody

Species/Host

Mouse

Reactivity

Human

Conjugation

Unconjugated

Tested Applications

FC, IF, IHC-P, WB

Immunogen

Amino acids 256-389 were used as the immunogen for the Bcl6 antibody.

Target

BCL6

Preservatives

PBS with 0.1 mg/ml rAlbumin and 0.05% sodium azide

Form/Appearance

Liquid

Concentration

0.2 mg/mL

Storage

Aliquot and Store at 2-8°C. Avoid freeze-thaw cycles.

Note

For research use only

Application notes

Flow Cytometry: 0.5-1 ug/million cells in 0.1ml
 Immunofluorescence: 1-2 ug/ml
 Immunohistochemistry (FFPE): 0.125-0.25 ug/ml
 Prediluted IHC only format: incubate for 30 min at RT (1)
 Optimal dilution of the Bcl6 antibody should be determined by the researcher.1. The prediluted format is supplied in a dropper bottle and is optimized for use in IHC. After epitope retrieval step (if required), drip mAb solution onto the tissue section and incubate at RT for 30 min.

Isotype

IgG1, kappa

Clonality

Monoclonal

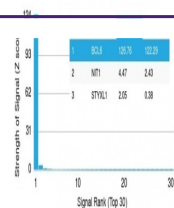
Uniprot ID
[P41182](#)
Dilution Range

Flow Cytometry: 0.5-1 ug/million cells in 0.1ml
 Immunofluorescence: 1-2 ug/ml
 Immunohistochemistry (FFPE): 0.125-0.25 ug/ml
 Prediluted IHC only format: incubate for 30 min at RT (1)
 Optimal dilution of the Bcl6 antibody should be determined by the researcher.1. The prediluted format is supplied in a dropper bottle and is optimized for use in IHC. After epitope retrieval step (if required), drip mAb solution onto the tissue section and incubate at RT for 30 min.

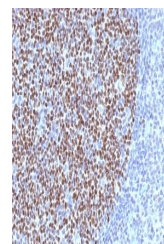
Expiration Date

12 months from date of receipt.

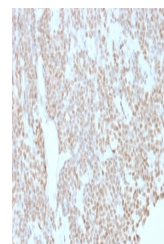
Human Protein Microarray Specificity Validation



Analysis of HuProt(TM) microarray contain...



IHC testing of FFPE human tonsil tissue ...



IHC testing of FFPE human lymphoma with ...