

---

## Product Datasheet

### ENO2 Antibody (orb1252151)

**Description**

ENO2 Antibody

**Species/Host**

Mouse

**Reactivity**

Human, Mouse, Rat

**Conjugation**

Unconjugated

**Tested Applications**

FC, IF, IHC-P, WB

**Immunogen**

Amino acids 416-433 of human NSE were used as the immunogen for this Neuron Specific Enolase antibody.

**Target**

ENO2

**Preservatives**

PBS with 0.1 mg/ml rAlbumin and 0.05% sodium azide

**Form/Appearance**

Liquid

**Concentration**

0.2 mg/mL

**Storage**

Aliquot and Store at 2-8°C. Avoid freeze-thaw cycles.

**Note**

For research use only

**Application notes**

Flow Cytometry: 0.5-1 ug/million cells in 0.1ml  
 Immunofluorescence: 1-2 ug/ml  
 Immunohistochemistry (FFPE): 0.1-0.2 ug/ml for 30 min at RT  
 Prediluted IHC only format: incubate for 30 min at RT (1)  
 The concentration stated for each application is a general starting point. Variations in protocols, secondaries and substrates may require the Neuron Specific Enolase antibody to be titrated up or down for optimal performance. 1. The prediluted format is supplied in a dropper bottle and is optimized for use in IHC. After epitope retrieval step (if required), drip mAb solution onto the tissue section and incubate at RT for 30 min.

**Isotype**

IgG2b

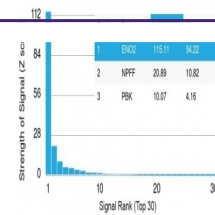
**Clonality**

Monoclonal

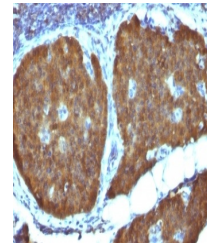
**Uniprot ID**
**P09104**
**Dilution Range**

Flow Cytometry: 0.5-1 ug/million cells in 0.1ml  
 Immunofluorescence: 1-2 ug/ml  
 Immunohistochemistry (FFPE): 0.1-0.2 ug/ml for 30 min at RT  
 Prediluted IHC only format: incubate for 30 min at RT (1)  
 The concentration stated for each application is a general starting point. Variations in protocols, secondaries and substrates may require the Neuron Specific Enolase antibody to be titrated up or down for optimal performance. 1. The prediluted format is supplied in a dropper bottle and is optimized for use in IHC. After epitope retrieval step (if required), drip mAb solution onto

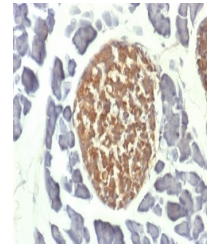
## Human Protein Microarray Specificity Validation



Analysis of HuProt(TM) microarray contain...



IHC testing of FFPE human pheochromocytoma...



IHC testing of FFPE mouse pancreas with ...