
Product Datasheet

S100B Antibody (orb1252143)

Description

S100B Antibody

Species/Host

Mouse

Reactivity

Human, Mouse, Rat

Conjugation

Unconjugated

Tested Applications

FC, IF, IHC-P

Immunogen

Recombinant full-length human S100B protein was used as the immunogen for the S100B antibody.

Target

S100B

Preservatives

PBS with 0.1 mg/ml rAlbumin and 0.05% sodium azide

Form/Appearance

Liquid

Concentration

0.2 mg/mL

Storage

Aliquot and Store at 2-8°C. Avoid freeze-thaw cycles.

Note

For research use only

Application notes

Flow Cytometry: 0.5-1 ug/million cells in 0.1ml
 Immunofluorescence: 1-2 ug/ml
 Immunohistology (FFPE): 0.5-1 ug/ml for 30 min at RT
 Prediluted IHC only format: incubate for 30 min at RT (1)
 Optimal dilution of the S100B antibody should be determined by the researcher.1. The prediluted format is supplied in a dropper bottle and is optimized for use in IHC. After epitope retrieval step (if required), drip mAb solution onto the tissue section and incubate at RT for 30 min.

Isotype

IgG2a, kappa

Clonality

Monoclonal

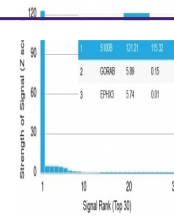
Uniprot ID
[P04271](#)
Dilution Range

Flow Cytometry: 0.5-1 ug/million cells in 0.1ml
 Immunofluorescence: 1-2 ug/ml
 Immunohistology (FFPE): 0.5-1 ug/ml for 30 min at RT
 Prediluted IHC only format: incubate for 30 min at RT (1)
 Optimal dilution of the S100B antibody should be determined by the researcher.1. The prediluted format is supplied in a dropper bottle and is optimized for use in IHC. After epitope retrieval step (if required), drip mAb solution onto the tissue section and incubate at RT for 30 min.

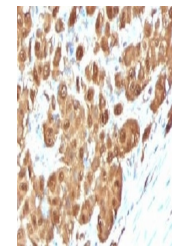
Expiration Date

12 months from date of receipt.

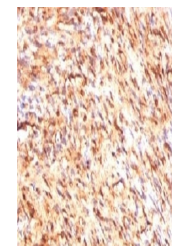
Human Protein Microarray Specificity Validation



Analysis of HuProt(TM) microarray contain...



IHC testing of FFPE human melanoma with ...



IHC testing of FFPE human schwannoma with...