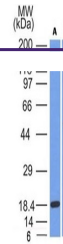


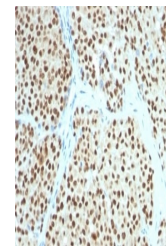
## Product Datasheet

### SOX10 Antibody (orb1252142)

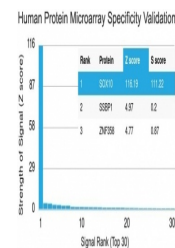
Description	SOX10 Antibody
<b>Species/Host</b>	Mouse
<b>Reactivity</b>	Human, Mouse
<b>Conjugation</b>	Unconjugated
<b>Tested Applications</b>	FC, IF, IHC-P, WB
<b>Immunogen</b>	Amino acids 115-269 of the human protein were used as the immunogen for the SOX10 antibody.
<b>Target</b>	SOX10
<b>Preservatives</b>	PBS with 0.1 mg/ml rAlbumin and 0.05% sodium azide
<b>Form/Appearance</b>	Liquid
<b>Concentration</b>	0.2 mg/mL
<b>Storage</b>	Aliquot and Store at 2-8°C. Avoid freeze-thaw cycles.
<b>Note</b>	For research use only
<b>Application notes</b>	Flow Cytometry: 0.5-1 ug/million cells in 0.1ml Immunofluorescence: 1-2 ug/ml Western blot: 0.5-1 ug/ml Immunohistochemistry (FFPE): 0.5-1 ug/ml for 30 min at RT Prediluted IHC only format: incubate for 30 min at RT (1)Optimal dilution of the SOX10 antibody should be determined by the researcher. 1. The prediluted format is supplied in a dropper bottle and is optimized for use in IHC. After epitope retrieval step (if required), drip mAb solution onto the tissue section and incubate at RT for 30 min.
<b>Isotype</b>	IgG2b, kappa
<b>Clonality</b>	Monoclonal
<b>Uniprot ID</b>	<a href="#">P56693</a>
<b>Dilution Range</b>	Flow Cytometry: 0.5-1 ug/million cells in 0.1ml Immunofluorescence: 1-2 ug/ml Western blot: 0.5-1 ug/ml Immunohistochemistry (FFPE): 0.5-1 ug/ml for 30 min at RT Prediluted IHC only format: incubate for 30 min at RT (1)Optimal dilution of the SOX10 antibody should be determined by the researcher. 1. The prediluted format is supplied in a dropper bottle and is optimized for use in IHC. After epitope retrieval step (if required), drip mAb solution onto the tissue section and incubate at RT for 30 min.
<b>Expiration Date</b>	12 months from date of receipt.



Western blot testing of A) partial recom...



IHC testing of FFPE human melanoma with ...



Analysis of HuProt(TM) microarray contain...