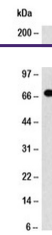
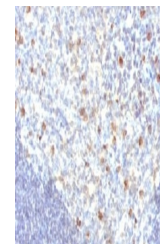

Product Datasheet

IGHM Antibody (orb1252108)

Description	IGHM Antibody
Species/Host	Mouse
Reactivity	Human
Conjugation	Unconjugated
Tested Applications	IF, IHC, WB
Immunogen	Human Mu heavy chain was used as the immunogen for this IgM antibody.
Target	IGHM
Preservatives	PBS with 0.1 mg/ml rAlbumin and 0.05% sodium azide
Form/Appearance	Liquid
Concentration	0.2 mg/mL
Storage	Aliquot and Store at 2-8°C. Avoid freeze-thaw cycles.
Note	For research use only
Application notes	Immunofluorescence: 0.5-1 ug/ml Western blot: 0.5-1 ug/ml IHC (FFPE): 0.5-1 ug/ml for 30 minutes at RT (1)Prediluted format : incubate for 30 min at RT (2)Due to differences in protocols and secondaries, the IgM antibody may need to be titered for optimal performance. 1. FFPE staining requires boiling sections in 10mM citrate buffer, pH 6.0, for 10-20 min followed by cooling at RT for 20 minutes. 2. The prediluted format is supplied in a dropper bottle and is optimized for use in IHC. After epitope retrieval step (if required), drip mAb solution onto the tissue section and incubate at RT for 30 min.
Isotype	IgG1, kappa
Clonality	Monoclonal
Uniprot ID	P01871
Dilution Range	Immunofluorescence: 0.5-1 ug/ml Western blot: 0.5-1 ug/ml IHC (FFPE): 0.5-1 ug/ml for 30 minutes at RT (1)Prediluted format : incubate for 30 min at RT (2)Due to differences in protocols and secondaries, the IgM antibody may need to be titered for optimal performance. 1. FFPE staining requires boiling sections in 10mM citrate buffer, pH 6.0, for 10-20 min followed by cooling at RT for 20 minutes. 2. The prediluted format is supplied in a dropper bottle and is optimized for use in IHC. After epitope retrieval step (if required), drip mAb solution onto the tissue section and incubate at RT for 30 min.



Western blot analysis of IgM antibody an...



IHC analysis of FFPE human tonsil tissue...