
Product Datasheet

TNFRSF8 Antibody (orb1252105)

Description

TNFRSF8 Antibody

Species/Host

Mouse

Reactivity

Human

Conjugation

Unconjugated

Tested

FC, IF, IHC-P

Applications
Immunogen

Recombinant human protein was used as the immunogen for the CD30 antibody.

Target

TNFRSF8

Preservatives

PBS with 0.1 mg/ml rAlbumin and 0.05% sodium azide

Form/Appearance

Liquid

Concentration

0.2 mg/mL

Storage

Aliquot and Store at 2-8°C. Avoid freez-thaw cycles.

Note

For research use only

Application notes

Flow Cytometry: 0.5-1 ug/million cells in 0.1ml
 Immunohistochemistry (FFPE): 0.5-1 ug/ml for 30 min at RT
 (1)Prediluted format: incubate for 30 min at RT
 (2)Optimal dilution of the CD30 antibody should be determined by the researcher.
 1. Staining of formalin-fixed tissues requires boiling tissue sections in 10mM Tris with 1mM EDTA, pH 9.0, for 10-20 min followed by cooling at RT for 20 min.
 2. The prediluted format is supplied in a dropper bottle and is optimized for use in IHC. After epitope retrieval step (if required), drip mAb solution onto the tissue section and incubate at RT for 30 min.

Isotype

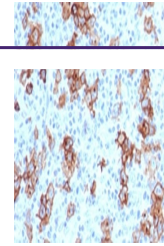
IgG1, kappa

Clonality

Monoclonal

Uniprot ID
P28908
Dilution Range

Flow Cytometry: 0.5-1 ug/million cells in 0.1ml
 Immunohistochemistry (FFPE): 0.5-1 ug/ml for 30 min at RT
 (1)Prediluted format: incubate for 30 min at RT
 (2)Optimal dilution of the CD30 antibody should be determined by the researcher.
 1. Staining of formalin-fixed tissues requires boiling tissue sections in 10mM Tris with 1mM EDTA, pH 9.0, for 10-20 min followed by cooling at RT for 20 min.
 2. The prediluted format is supplied in a dropper bottle and is optimized for use in IHC. After epitope retrieval step (if required), drip mAb solution onto the tissue section and incubate at RT for 30 min.



IHC testing of FFPE human Hodgkin's lymph...