

---

## Product Datasheet

### CDKN1B Antibody (orb1252096)

**Description**

CDKN1B Antibody

**Species/Host**

Mouse

**Reactivity**

Human, Mouse, Rat

**Conjugation**

Unconjugated

**Tested Applications**

FC, IF, IHC-P, WB

**Immunogen**

Recombinant human protein was used as the immunogen for the p27Kip1 antibody.

**Target**

CDKN1B

**Preservatives**

PBS with 0.1 mg/ml rAlbumin and 0.05% sodium azide

**Form/Appearance**

Liquid

**Concentration**

0.2 mg/mL

**Storage**

Aliquot and Store at 2-8°C. Avoid freeze-thaw cycles.

**Note**

For research use only

**Application notes**

Flow Cytometry: 0.5-1 ug/million cells in 0.1ml  
 Immunofluorescence: 0.5-1 ug/ml  
 Western blot: 0.5-1 ug/ml  
 Immunohistochemistry (FFPE): 0.25-0.5 ug/ml for 30 min at RT (1)  
 Prediluted format : incubate for 30 min at RT (2)  
 Optimal dilution of the p27Kip1 antibody to be determined by the researcher.  
 1. Staining of formalin-fixed tissues requires boiling tissue sections in 10mM Citrate buffer, pH 6.0, for 10-20 min followed by cooling at RT for 20 min  
 2. The prediluted format is supplied in a dropper bottle and is optimized for use in IHC. After epitope retrieval step (if required), drip mAb solution onto the tissue section and incubate at RT for 30 min.

**Isotype**

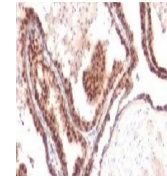
IgG1, kappa

**Clonality**

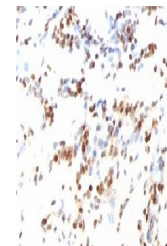
Monoclonal

**Uniprot ID**
**P46527**
**Dilution Range**

Flow Cytometry: 0.5-1 ug/million cells in 0.1ml  
 Immunofluorescence: 0.5-1 ug/ml  
 Western blot: 0.5-1 ug/ml  
 Immunohistochemistry (FFPE): 0.25-0.5 ug/ml for 30 min at RT (1)  
 Prediluted format : incubate for 30 min at RT (2)  
 Optimal dilution of the p27Kip1 antibody to be determined by the researcher.  
 1. Staining of formalin-fixed tissues requires boiling tissue sections in 10mM Citrate buffer, pH 6.0, for 10-20 min followed by cooling at RT for 20 min  
 2. The prediluted format is supplied in a dropper bottle and is optimized for use in IHC. After epitope retrieval step (if required), drip mAb solution onto the



IHC testing of FFPE human prostate cancer...



IHC testing of FFPE human colon carcinom...



IHC testing of FFPE rat colon tissue and...