

---

## Product Datasheet

### NKX2-1 Antibody (orb1252069)

**Description**

NKX2-1 Antibody

**Species/Host**

Mouse

**Reactivity**

Human, Mouse, Rat

**Conjugation**

Unconjugated

**Tested**

FC, IF, IHC-P

**Applications**
**Immunogen**

Recombinant protein was used as the immunogen for the TTF1 antibody.

**Target**

NKX2-1

**Preservatives**

PBS with 0.1 mg/ml rAlbumin and 0.05% sodium azide

**Form/Appearance**

Liquid

**Concentration**

0.2 mg/mL

**Storage**

Aliquot and Store at 2-8°C. Avoid freeze-thaw cycles.

**Note**

For research use only

**Application notes**

Flow Cytometry: 0.5-1 ug/million cells in 0.1ml  
 Immunofluorescence: 0.5-1 ug/ml  
 Immunohistochemistry (FFPE): 0.5-1 ug/ml for 30 min at RT  
 (1) Prediluted format: incubate for 30 min at RT  
 (2) Titration of the TTF1 antibody may be required for optimal performance.  
 1. FFPE testing requires sections to be boiled in pH6 10mM citrate buffer for 10-20 minutes, followed by cooling at RT for 20 minutes, prior to staining.  
 2. The prediluted format is supplied in a dropper bottle and is optimized for use in IHC. After epitope retrieval step (if required), drip mAb solution onto the tissue section and incubate at RT for 30 min.

**Isotype**

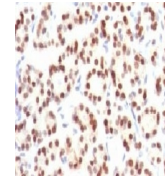
IgG1, kappa

**Clonality**

Monoclonal

**Uniprot ID**
**P43699**
**Dilution Range**

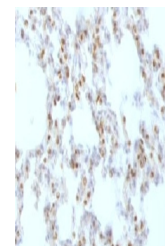
Flow Cytometry: 0.5-1 ug/million cells in 0.1ml  
 Immunofluorescence: 0.5-1 ug/ml  
 Immunohistochemistry (FFPE): 0.5-1 ug/ml for 30 min at RT  
 (1) Prediluted format: incubate for 30 min at RT  
 (2) Titration of the TTF1 antibody may be required for optimal performance.  
 1. FFPE testing requires sections to be boiled in pH6 10mM citrate buffer for 10-20 minutes, followed by cooling at RT for 20 minutes, prior to staining.  
 2. The prediluted format is supplied in a dropper bottle and is optimized for use in IHC. After epitope retrieval step (if required), drip mAb solution onto the



IHC testing of FFPE human thyroid tissue...



IHC testing of FFPE human lung tissue wi...



IHC testing of FFPE rat lung tissue with...