
Product Datasheet

FBX05 Antibody (orb1252065)

Description

FBXO5 Antibody

Species/Host

Mouse

Reactivity

Human

Conjugation

Unconjugated

Tested Applications

IF, IHC-P, WB

Immunogen

A human partial recombinant N-terminal protein fragment was used as the immunogen for the EMI-1 antibody.

Target

FBXO5

Preservatives

PBS with 0.1 mg/ml rAlbumin and 0.05% sodium azide

Form/Appearance

Liquid

Concentration

0.2 mg/mL

Storage

Aliquot and Store at 2-8°C. Avoid freeze-thaw cycles.

Note

For research use only

Application notes

Western blot: 1-2 ug/ml Immunofluorescence: 0.5-1 ug/ml Immunohistochemistry (FFPE): 0.5-1 ug/ml for 30 minutes at RT (1) Prediluted format : incubate for 30 min at RT (2) Optimal dilution of the EMI-1 antibody should be determined by the researcher. 1. Staining of formalin-fixed tissues requires boiling tissue sections in 10mM Citrate buffer, pH 6.0 for 10-20 min followed by cooling at RT for 20 minutes 2. The prediluted format is supplied in a dropper bottle and is optimized for use in IHC. After epitope retrieval step (if required), drip mAb solution onto the tissue section and incubate at RT for 30 min.

Isotype

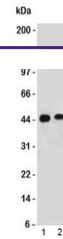
IgG2a, kappa

Clonality

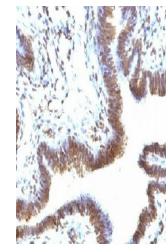
Monoclonal

Uniprot ID
[Q9UKT4](#)
Dilution Range

Western blot: 1-2 ug/ml Immunofluorescence: 0.5-1 ug/ml Immunohistochemistry (FFPE): 0.5-1 ug/ml for 30 minutes at RT (1) Prediluted format : incubate for 30 min at RT (2) Optimal dilution of the EMI-1 antibody should be determined by the researcher. 1. Staining of formalin-fixed tissues requires boiling tissue sections in 10mM Citrate buffer, pH 6.0 for 10-20 min followed by cooling at RT for 20 minutes 2. The prediluted format is supplied in a dropper bottle and is optimized for use in IHC. After epitope retrieval step (if required), drip mAb solution onto the tissue section and incubate at RT for 30 min.



Western blot testing of human 1) HeLa an...



IHC testing of FFPE human ovarian carcin...