

Product Datasheet

KRT76 Antibody (orb1252057)

Description

KRT76 Antibody

Species/Host

Mouse

Reactivity

Human, Rat

Conjugation

Unconjugated

Tested

IF, IHC-P, WB

Applications
Immunogen

An amino acid sequence common to basic keratins was used as the immunogen for the Basic Cytokeratin antibody.

Target

KRT76

Preservatives

PBS with 0.1 mg/ml rAlbumin and 0.05% sodium azide

Form/Appearance

Liquid

Concentration

0.2 mg/mL

Storage

Aliquot and Store at 2-8°C. Avoid freeze-thaw cycles.

Note

For research use only

Application notes

Western blot: 1-2 ug/ml (3) Immunofluorescence: 1-2 ug/ml Immunohistochemistry (FFPE): 0.5-1 ug/ml for 30 min at RT (1) Prediluted format: incubate for 30 min at RT (2) Titering of the Basic Cytokeratin antibody may be required for optimal performance. 1. FFPE testing requires sections to be boiled in pH6 10mM citrate buffer for 10-20 minutes, followed by cooling at RT for 20 minutes, prior to staining. 2. The prediluted format is supplied in a dropper bottle and is optimized for use in IHC. After epitope retrieval step (if required), drip mAb solution onto the tissue section and incubate at RT for 30 min. 3. This Basic Cytokeratin antibody detects the following keratins/CKs: CK1 (67kDa), CK3 (64kDa), CK4 (59kDa), CK5 (58 kDa), CK6 (56kDa), CK8 (52 kDa).

Isotype

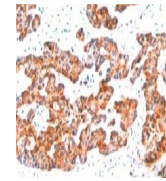
IgG1, kappa

Clonality

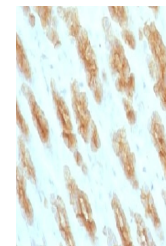
Monoclonal

Uniprot ID
[Q01546](#)
Dilution Range

Western blot: 1-2 ug/ml (3) Immunofluorescence: 1-2 ug/ml Immunohistochemistry (FFPE): 0.5-1 ug/ml for 30 min at RT (1) Prediluted format: incubate for 30 min at RT (2) Titering of the Basic Cytokeratin antibody may be required for optimal performance. 1. FFPE testing requires sections to be boiled in pH6 10mM citrate buffer for 10-20 minutes, followed by cooling at RT for 20 minutes, prior to staining. 2. The prediluted format is supplied in a dropper bottle and is optimized for use in IHC. After epitope



IHC testing of FFPE human breast carcinoma...



IHC testing of FFPE rat stomach with Bas...