

Product Datasheet

CCNB1 Antibody (orb1252007)

Description

CCNB1 Antibody

Species/Host

Mouse

Reactivity

Human, Mouse

Conjugation

Unconjugated

Tested

IF, IHC-P

Applications
Immunogen

Recombinant human full-length protein was used as the immunogen for the Cyclin B1 antibody.

Target

CCNB1

Preservatives

PBS with 0.1 mg/ml rAlbumin and 0.05% sodium azide

Form/Appearance

Liquid

Concentration

0.2 mg/mL

Storage

Aliquot and Store at 2-8°C. Avoid freeze-thaw cycles.

Note

For research use only

Application notes

Immunofluorescence: 1-2 ug/ml
 Immunohistochemistry (FFPE): 1-2 ug/ml for 30 min at RT (1) Prediluted format: incubate for 30 min at RT (2) Titering of the Cyclin B1 antibody may be required for optimal performance. 1. FFPE testing requires sections to be boiled in pH6 10mM citrate buffer for 10-20 minutes, followed by cooling at RT for 20 minutes, prior to staining. 2. The prediluted format is supplied in a dropper bottle and is optimized for use in IHC. After epitope retrieval step (if required), drip mAb solution onto the tissue section and incubate at RT for 30 min.

Isotype

IgG1, kappa

Clonality

Monoclonal

Uniprot ID
P14635
Dilution Range

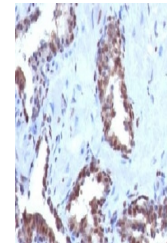
Immunofluorescence: 1-2 ug/ml
 Immunohistochemistry (FFPE): 1-2 ug/ml for 30 min at RT (1) Prediluted format: incubate for 30 min at RT (2) Titering of the Cyclin B1 antibody may be required for optimal performance. 1. FFPE testing requires sections to be boiled in pH6 10mM citrate buffer for 10-20 minutes, followed by cooling at RT for 20 minutes, prior to staining. 2. The prediluted format is supplied in a dropper bottle and is optimized for use in IHC. After epitope retrieval step (if required), drip mAb solution onto the tissue section and incubate at RT for 30 min.

Expiration Date

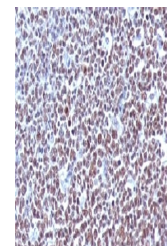
12 months from date of receipt.



IHC testing of FFPE human ovarian carcin...



IHC testing of FFPE human prostate carci...



IHC testing of FFPE human tonsil with Cy...