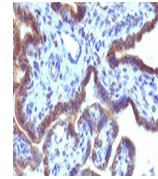
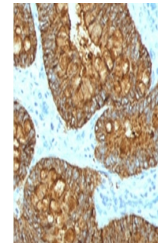

Product Datasheet

MAML3 Antibody (orb1251965)

Description	MAML3 Antibody
Species/Host	Mouse
Reactivity	Human
Conjugation	Unconjugated
Tested Applications	FC, IF, IHC
Immunogen	A human full length recombinant protein was used as the immunogen for this MAML3 antibody.
Target	MAML3
Preservatives	PBS with 0.1 mg/ml rAlbumin and 0.05% sodium azide
Form/Appearance	Liquid
Concentration	0.2 mg/mL
Storage	Aliquot and Store at 2-8°C. Avoid freeze-thaw cycles.
Note	For research use only
Application notes	Flow Cytometry: 0.5-1ug/10 ⁶ cellsIF: 1-2 ug/mlIHC (FFPE): 0.5-1 ug/ml (1)The concentration stated for each application is a general starting point. Variations in protocols, secondaries and substrates may require the MAML3 antibody to be titered up or down for optimal performance.1. Staining of FFPE tissue requires boiling sections in 10mM Tris with 1mM EDTA, pH9, for 10-20 min followed by cooling at RT for 20 min.
Isotype	IgG1
Clonality	Monoclonal
Uniprot ID	Q96JK9
Dilution Range	Flow Cytometry: 0.5-1ug/10 ⁶ cellsIF: 1-2 ug/mlIHC (FFPE): 0.5-1 ug/ml (1)The concentration stated for each application is a general starting point. Variations in protocols, secondaries and substrates may require the MAML3 antibody to be titered up or down for optimal performance.1. Staining of FFPE tissue requires boiling sections in 10mM Tris with 1mM EDTA, pH9, for 10-20 min followed by cooling at RT for 20 min.
Expiration Date	12 months from date of receipt.



IHC testing of FFPE human placenta with ...



IHC testing of FFPE human colon carcinom...



IHC testing of FFPE human cervical carci...