
Product Datasheet

Multi-Cytokeratin Antibody [SPM583] (orb1251856)

Description

Multi-Cytokeratin Antibody [SPM583]


Species/Host

Mouse

Reactivity

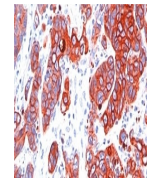
Bovine, Frog, Goat, Guinea pig, Human, Marmoset, Mouse, Porcine, Rat

Conjugation

Unconjugated

Tested Applications

FC, IF, IHC, WB



Formalin-fixed, paraffin-embedded human ...

Immunogen

A keratin-enriched preparation from cultured human A431 cells was used as the immunogen for this anti-Multi-Cytokeratin antibody.

Target

KRT4, KRT5, KRT6A, KRT6B, KRT8, KRT10, KRT13, KRT18

Preservatives

PBS with 0.1 mg/ml rAlbumin and 0.05% sodium azide

Form/Appearance

Liquid

Concentration

0.2 mg/mL

Storage

Aliquot and Store at 2-8°C. Avoid freeze-thaw cycles.

Note

For research use only

Application notes

Flow Cytometry: 0.5-1 ug/million cells in 0.1ml
 Immunofluorescence: 0.5-1 ug/ml
 Western blot: 0.5-1 ug/ml
 Immunohistochemistry (FFPE): 0.5-1 ug/ml for 30 min at RT (1)
 Prediluted format: incubate for 30 min at RT (2)
 The optimal dilution of the anti-Multi-Cytokeratin antibody for each application should be determined by the researcher.
 1. Staining of formalin-fixed tissues requires boiling tissue sections in 10mM citrate buffer, pH 6.0, for 10-20 min followed by cooling at RT for 20 minutes.
 2. The prediluted format is supplied in a dropper bottle and is optimized for use in IHC. After epitope retrieval step (if required), drip mAb solution onto the tissue section and incubate at RT for 30 min.

Isotype

IgG1

Clonality

Monoclonal

Uniprot ID
P04259, P19013, P02538, P48668, P05783, P05787, P13645, P13646, P13647
Dilution Range

Flow Cytometry: 0.5-1 ug/million cells in 0.1ml
 Immunofluorescence: 0.5-1 ug/ml
 Western blot: 0.5-1 ug/ml
 Immunohistochemistry (FFPE): 0.5-1 ug/ml for 30 min at RT (1)
 Prediluted format: incubate for 30 min at RT (2)
 The optimal dilution of the anti-Multi-