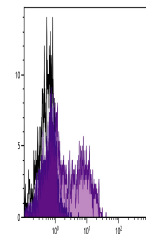


## Product Datasheet

### Klrg1 Antibody (PE) (orb1251641)

<b>Description</b>	Klrg1 Antibody (PE)
<b>Species/Host</b>	Hamster
<b>Reactivity</b>	Human, Mouse
<b>Conjugation</b>	PE
<b>Tested Applications</b>	FC
<b>Immunogen</b>	IL-2-activated NK cells (A-LAK cells) from B6 (H-2b) mice
<b>Target</b>	Klrg1
<b>Preservatives</b>	Supplied in PBS/NaN3 and a stabilizing agent
<b>Form/Appearance</b>	Liquid
<b>Concentration</b>	0.1 mg/mL
<b>Storage</b>	Store vial at 2-8°C
<b>Note</b>	For research use only
<b>Application notes</b>	KLRG1 Antibody [2F1] for use in flow cytometry assays.
<b>Isotype</b>	IgG
<b>Clonality</b>	Monoclonal
<b>Uniprot ID</b>	<a href="#">O88713</a>
<b>NCBI</b>	<a href="#">O88713</a>
<b>Dilution Range</b>	KLRG1 Antibody [2F1] for use in flow cytometry assays.
<b>Expiration Date</b>	12 months from date of receipt.



C57BL/6  
mouse  
splenocytes  
were stained  
W...