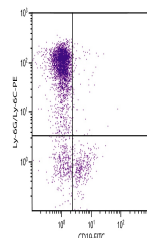


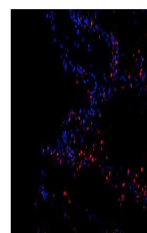
Product Datasheet

Ly6g Antibody (PE) (orb1251617)

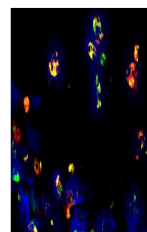
| | |
|----------------------------|--|
| Description | Ly6g Antibody (PE) |
| Species/Host | Rat |
| Reactivity | Mouse |
| Conjugation | PE |
| Tested Applications | FC, FLISA, ICC, IHC-Fr |
| Target | Ly6g |
| Preservatives | Supplied in PBS/NaN3 and a stabilizing agent |
| Form/Appearance | Liquid |
| Concentration | 0.1 mg/mL |
| Storage | Store vial at 2-8°C |
| Note | For research use only |
| Application notes | Ly-6G/Ly-6C Antibody [RB6-8C5] for use in flow cytometry assays. |
| Isotype | IgG2b |
| Clonality | Monoclonal |
| Uniprot ID | P35461 |
| NCBI | P35461 |
| Dilution Range | Ly-6G/Ly-6C Antibody [RB6-8C5] for use in flow cytometry assays. |
| Expiration Date | 12 months from date of receipt. |



C57BL/6 mouse bone marrow cells were sta...



Frozen thermally burned mouse tissue sec...



Frozen thermally burned mouse tissue sec...