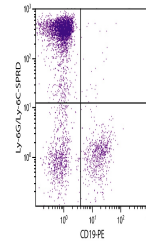


## Product Datasheet

### Ly6g Antibody (PE/Cy5) (orb1251615)

<b>Description</b>	Ly6g Antibody (PE/Cy5)
<b>Species/Host</b>	Rat
<b>Reactivity</b>	Mouse
<b>Conjugation</b>	PE/Cy5
<b>Tested Applications</b>	FC, IP
<b>Target</b>	Ly6g
<b>Preservatives</b>	Supplied in PBS/NaN3 and a stabilizing agent
<b>Form/Appearance</b>	Liquid
<b>Concentration</b>	0.1 mg/mL
<b>Storage</b>	Store vial at 2-8°C
<b>Note</b>	For research use only
<b>Application notes</b>	Ly-6G/Ly-6C Antibody [RB6-8C5] for use in flow cytometry assays.
<b>Isotype</b>	IgG2b
<b>Clonality</b>	Monoclonal
<b>Uniprot ID</b>	<a href="#">P35461</a>
<b>NCBI</b>	<a href="#">P35461</a>
<b>Dilution Range</b>	Ly-6G/Ly-6C Antibody [RB6-8C5] for use in flow cytometry assays.
<b>Expiration Date</b>	12 months from date of receipt.



BALB/c mouse bone marrow cells were stai...