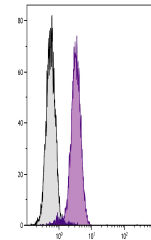


Product Datasheet

BCL2L1 Antibody (FITC) (orb1251474)

Description	BCL2L1 Antibody (FITC)
Species/Host	Mouse
Reactivity	Human, Mouse, Primate, Rat
Conjugation	FITC
Tested Applications	FC
Immunogen	Recombinant human Bcl-xS
Target	BCL2L1
Preservatives	Supplied in PBS/NaN3
Form/Appearance	Liquid
Concentration	0.1 mg/mL
Storage	Store vial at 2-8°C
Note	For research use only
Application notes	Bcl-xL Antibody [7B2.5] for use in flow cytometry, immunohistochemistry / immunocytochemistry, and western blotting assays.
Isotype	IgG3
Clonality	Monoclonal
Uniprot ID	Q07817
NCBI	Q07817
Dilution Range	Bcl-xL Antibody [7B2.5] for use in flow cytometry, immunohistochemistry / immunocytochemistry, and western blotting assays.
Expiration Date	12 months from date of receipt.



T cell leukemia cell line Jurkat was int...