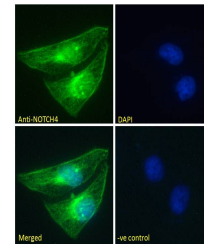


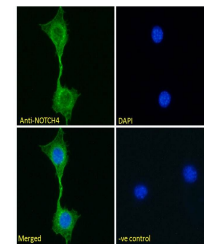
Product Datasheet

NOTCH4 antibody (orb125146)

Description	Goat polyclonal antibody to NOTCH4
Species/Host	Goat
Reactivity	Bovine, Canine, Human, Mouse, Porcine, Rat
Conjugation	Unconjugated
Tested Applications	ELISA, IF
Target	NOTCH4 (aa1261-1273)
Preservatives	Supplied at 0.5 mg/ml in Tris saline, 0.02% sodium azide, pH 7.3 with 0.5% bovine serum albumin. Aliquot and store at -20°C. Minimize freezing and thawing.
Storage	Aliquot and store at -20°C. Minimize freezing and thawing.
Note	For research use only
Application notes	WB: Preliminary experiments gave an approx 27kDa band in all human, mouse and rat tissue and cell line lysates tested after 1µg/ml antibody staining. Please note that currently we cannot find an explanation in the literature for the band we observe given the. Notes: Immunofluorescence: Strong expression of the protein seen in the nuclei and membranes of HeLa cells, and in the membranes of NIH3T3 cells. Recommended concentration: 10µg/ml.
Protein Sequence	DHFHNGHCEKGCNN
Clonality	Polyclonal
MW	210
Entrez	4855
Dilution Range	ELISA: 1:8000, WB: 1 µg/ml, IHC-P: 10 µg/ml
Expiration Date	12 months from date of receipt.



Immunofluorescence analysis of HeLa cell...



Immunofluorescence analysis of NIH3T3 ce...