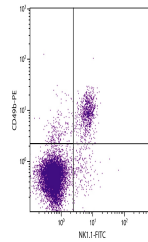


Product Datasheet

Klr1c Antibody (FITC) (orb1251184)

Description	Klr1c Antibody (FITC)
Species/Host	Mouse
Reactivity	Mouse
Conjugation	FITC
Tested Applications	Blocking, FC, IHC-Fr, IP
Immunogen	CE mouse spleen enriched for NK-1+ cells and bone marrow cells
Target	Klr1c
Preservatives	Supplied in PBS/NaN3
Form/Appearance	Liquid
Concentration	0.5 mg/mL
Storage	Store vial at 2-8°C
Note	For research use only
Application notes	NK1.1 Antibody [PK136] for use in flow cytometry and immunohistochemistry assays.
Isotype	IgG2a
Clonality	Monoclonal
Uniprot ID	P27814
NCBI	P27814
Dilution Range	NK1.1 Antibody [PK136] for use in flow cytometry and immunohistochemistry assays.
Expiration Date	12 months from date of receipt.



C57BL/6 mouse splenocytes were stained with NK1.1-FITC and CD45R1-FITC.