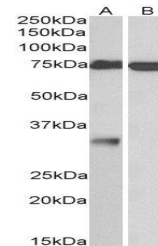


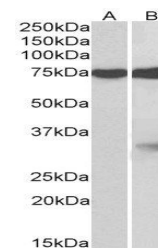
## Product Datasheet

### GPM6A antibody (orb125104)

<b>Description</b>	Goat polyclonal antibody to GPM6A
<b>Species/Host</b>	Goat
<b>Reactivity</b>	Canine, Human, Mouse, Rat
<b>Conjugation</b>	Unconjugated
<b>Tested Applications</b>	ELISA, IHC, WB
<b>Target</b>	GPM6A
<b>Preservatives</b>	Supplied at 0.5 mg/ml in Tris saline, 0.02% sodium azide, pH 7.3 with 0.5% bovine serum albumin. Aliquot and store at -20°C. Minimize freezing and thawing.
<b>Storage</b>	Aliquot and store at -20°C. Minimize freezing and thawing.
<b>Note</b>	For research use only
<b>Application notes</b>	WB: Approx 33kDa band observed in Human Brain (Cerebellum) and Rat Brain lysates. An approx. 75kDa band was also observed in Human Cerebellum, Olfactory Bulb and in fetal Mouse and Rat Brain lysates (calculated MW of 31.2kDa according to Human NP_005268.1 and. IHC: Paraffin embedded Human Brain (Cerebellum). Recommended concentration: 3.75µg/ml.. Notes: This product has been demonstrated not suitable in IF.
<b>Protein Sequence</b>	QTYFEMARTAGD
<b>Clonality</b>	Polyclonal
<b>MW</b>	31.2; 31.2; 29.9
<b>Entrez</b>	<a href="#">2823</a>
<b>Dilution Range</b>	ELISA: 1:32000, WB: 0.5-2 µg/ml, IHC-P: 3.75 µg/ml
<b>Expiration Date</b>	12 months from date of receipt.



Western blot analysis of staining of Hum...



Western blot analysis of staining of Hum...