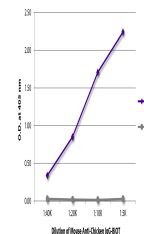


## Product Datasheet

### IgY Antibody [G-1] (Biotin) (orb1250990)

<b>Description</b>	IgY Antibody [G-1] (Biotin)
<b>Species/Host</b>	Mouse
<b>Reactivity</b>	Aves, Gallus
<b>Conjugation</b>	Biotin
<b>Tested Applications</b>	FC, IHC-Fr
<b>Preservatives</b>	Supplied in PBS/NaN3
<b>Form/Appearance</b>	Liquid
<b>Concentration</b>	0.5 mg/mL
<b>Storage</b>	Store vial at 2-8°C
<b>Note</b>	For research use only
<b>Application notes</b>	IgY Antibody [G-1] for use in flow cytometry, immunohistochemistry / immunocytochemistry, ELISA, and immunoprecipitation assays.
<b>Isotype</b>	IgG1
<b>Clonality</b>	Monoclonal
<b>Dilution Range</b>	IgY Antibody [G-1] for use in flow cytometry, immunohistochemistry / immunocytochemistry, ELISA, and immunoprecipitation assays.
<b>Expiration Date</b>	12 months from date of receipt.



ELISA plate was coated with purified chi...