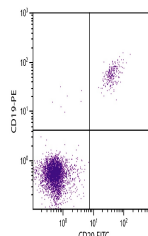


Product Datasheet

MS4A1 Antibody (FITC) (orb1250762)

| | |
|----------------------------|--|
| Description | MS4A1 Antibody (FITC) |
| Species/Host | Mouse |
| Reactivity | Feline, Human |
| Conjugation | FITC |
| Tested Applications | FC |
| Target | MS4A1 |
| Preservatives | Supplied in PBS/NaN3 |
| Form/Appearance | Liquid |
| Concentration | batch dependent |
| Storage | Store vial at 2-8°C |
| Note | For research use only |
| Application notes | CD20 Antibody [B-Ly1] for use in flow cytometry and immunohistochemistry assays. |
| Isotype | IgG1 |
| Clonality | Monoclonal |
| Uniprot ID | P11836 |
| NCBI | P11836 |
| Dilution Range | CD20 Antibody [B-Ly1] for use in flow cytometry and immunohistochemistry assays. |
| Expiration Date | 12 months from date of receipt. |



Human peripheral blood lymphocytes were ...