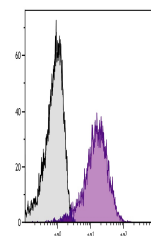


Product Datasheet

CD36 Antibody (FITC) (orb1250651)

Description	CD36 Antibody (FITC)
Species/Host	Mouse
Reactivity	Human
Conjugation	FITC
Tested Applications	FC
Immunogen	Tonsil cells and peripheral blood mononuclear cells
Target	CD36
Preservatives	Supplied in PBS/NaN3
Form/Appearance	Liquid
Concentration	batch dependent
Storage	Store vial at 2-8°C
Note	For research use only
Application notes	CD36 Antibody [SMf] for use in flow cytometry, immunohistochemistry / immunocytochemistry, and western blotting assays.
Isotype	IgM
Clonality	Monoclonal
Uniprot ID	P16671
NCBI	P16671
Dilution Range	CD36 Antibody [SMf] for use in flow cytometry, immunohistochemistry / immunocytochemistry, and western blotting assays.
Expiration Date	12 months from date of receipt.



Human platelets were stained with Mouse ...