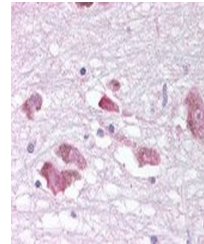


## Product Datasheet

### MCHR1 Antibody (orb1250535)

<b>Description</b>	MCHR1 Antibody
<b>Species/Host</b>	Rabbit
<b>Reactivity</b>	Bovine, Canine, Human, Monkey, Primate
<b>Conjugation</b>	Unconjugated
<b>Tested Applications</b>	ELISA, IHC
<b>Immunogen</b>	MCHR1 antibody was raised against a peptide located in the C-Terminal domain of MCHR1 (Human).
<b>Target</b>	MCHR1
<b>Preservatives</b>	PBS, 0.1% sodium azide.
<b>Form/Appearance</b>	Liquid
<b>Concentration</b>	1 mg/ml
<b>Storage</b>	MCHR1 antibody should be stored long term (months) at -80 °C and short term (days) at 4 °C. As with all antibodies avoid freeze/thaw cycles.
<b>Note</b>	For research use only
<b>Application notes</b>	MCHR1 antibody can be used in ELISA, and immunohistochemistry starting at 15 µg/mL.
<b>Clonality</b>	Polyclonal
<b>Uniprot ID</b>	<a href="#">Q99705</a>
<b>NCBI</b>	<a href="#">Q99705</a>
<b>Dilution Range</b>	MCHR1 antibody can be used in ELISA, and immunohistochemistry starting at 15 µg/mL.
<b>Expiration Date</b>	12 months from date of receipt.



Immunohistochemistry staining of MCHR1 i...