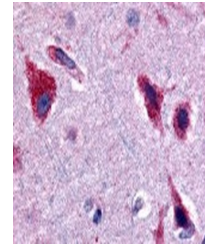


Product Datasheet

CERK Antibody (orb1250483)

Description	CERK Antibody
Species/Host	Rabbit
Reactivity	Human, Monkey, Primate
Conjugation	Unconjugated
Tested Applications	IHC
Immunogen	Ceramide Kinase antibody was raised against a peptide located near the internal domain of Ceramide Kinase (Human).
Target	CERK
Preservatives	PBS, 0.1% sodium azide.
Form/Appearance	Liquid
Concentration	1 mg/ml
Storage	Ceramide Kinase antibody should be stored long term (months) at -80 °C and short term (days) at 4 °C. As with all antibodies avoid freeze/thaw cycles.
Note	For research use only
Application notes	Ceramide Kinase antibody can be used in ELISA, Western Blot, and immunohistochemistry starting at 5 µg/mL.
Clonality	Polyclonal
Uniprot ID	Q8TCT0
NCBI	Q8TCT0
Dilution Range	Ceramide Kinase antibody can be used in ELISA, Western Blot, and immunohistochemistry starting at 5 µg/mL.
Expiration Date	12 months from date of receipt.



Immunohistochemistry staining of Ceramid...