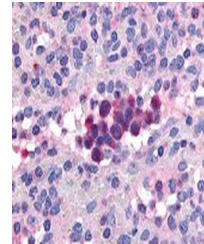


## Product Datasheet

### PDE9A Antibody (orb1250459)

<b>Description</b>	PDE9A Antibody
<b>Species/Host</b>	Rabbit
<b>Reactivity</b>	Canine, Human, Monkey, Primate
<b>Conjugation</b>	Unconjugated
<b>Tested Applications</b>	IHC
<b>Immunogen</b>	PDE9A antibody was raised against a peptide located near the internal domain of PDE9A (Human).
<b>Target</b>	PDE9A
<b>Preservatives</b>	PBS, 0.1% sodium azide.
<b>Form/Appearance</b>	Liquid
<b>Concentration</b>	1 mg/ml
<b>Storage</b>	PDE9A antibody should be stored long term (months) at -80 °C and short term (days) at 4 °C. As with all antibodies avoid freeze/thaw cycles.
<b>Note</b>	For research use only
<b>Application notes</b>	PDE9A antibody can be used in ELISA, Western Blot, immunohistochemistry starting at 5 µg/mL, and immunofluorescence starting at 10 µg/mL.
<b>Clonality</b>	Polyclonal
<b>Uniprot ID</b>	<b>076083</b>
<b>NCBI</b>	<b>076083</b>
<b>Dilution Range</b>	PDE9A antibody can be used in ELISA, Western Blot, immunohistochemistry starting at 5 µg/mL, and immunofluorescence starting at 10 µg/mL.
<b>Expiration Date</b>	12 months from date of receipt.



Immunohistochemistry staining of PDE9A i...