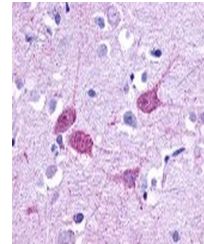


Product Datasheet

HTR1F Antibody (orb1250443)

Description	HTR1F Antibody
Species/Host	Rabbit
Reactivity	Human, Primate
Conjugation	Unconjugated
Tested Applications	IHC
Immunogen	HTR1F antibody was raised against a peptide located in the 3rd cytoplasmic domain of HTR1F (Human).
Target	HTR1F
Preservatives	PBS, 0.1% sodium azide.
Form/Appearance	Liquid
Concentration	1 mg/ml
Storage	HTR1F antibody should be stored long term (months) at -80 °C and short term (days) at 4 °C. As with all antibodies avoid freeze/thaw cycles.
Note	For research use only
Application notes	HTR1F antibody can be used in Western Blot, and immunohistochemistry starting at 1:100.
Clonality	Polyclonal
Uniprot ID	P30939
NCBI	P30939
Dilution Range	HTR1F antibody can be used in Western Blot, and immunohistochemistry starting at 1:100.
Expiration Date	12 months from date of receipt.



Immunohistochemistry staining of HTR1F i...