
Product Datasheet

IGF1 antibody (orb125044)

Description

Goat Polyclonal to IGF1. NP_001104753.1;

PMID: 20230795...

Species/Host

Goat

Reactivity

Bovine, Canine, Human, Mouse, Porcine, Rat

Conjugation

Unconjugated

Tested Applications

ELISA, FC, IF, IHC, WB

Target

IGF1

Preservatives

Supplied at 0.5 mg/ml in Tris saline, 0.02% sodium azide, pH 7.3 with 0.5% bovine serum albumin. Aliquot and store at -20°C. Minimize freezing and thawing.

Storage

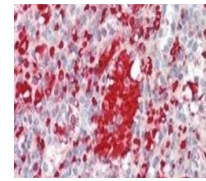
Aliquot and store at -20°C. Minimize freezing and thawing.

Note

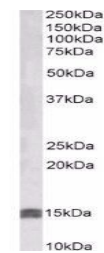
For research use only

Application notes

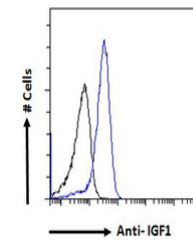
WB: Approx 15kDa band observed in Human Uterus lysates (calculated MW of 15.2kDa according to NP_001104754.1). Recommended concentration 0.5-2µg/ml. Primary incubation 1 hour at room temperature. Negative Control: HepG2 cell lysate. Prelimi. IHC: Paraffin embedded Human Spleen. Recommended concentration: 3.75µg/ml.. Notes: Immunofluorescence: Strong expression of the protein seen in the cytoplasm of HEK293 cells. Recommended concentration: 10µg/ml. Flow Cytometry: Flow cytometric analysis of A549 cells. Recommended concentration: 10ug/ml



Immunohistochemical staining of Human Sp...



Western blot analysis of Human Uterus ly...



Flow cytometric analysis of paraformalde...

Protein Sequence

RSVRAQRHTD

Clonality

Polyclonal

MW

17.8; 15.2; 21.8; 17.0

Entrez
3479
Dilution Range

ELISA: 1:32000, WB: 0.5-2 µg/ml, IHC-P: 3.75 µg/ml

Expiration Date

12 months from date of receipt.