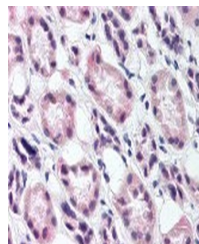


Product Datasheet

RREB1 Antibody (orb1250416)

Description	RREB1 Antibody
Species/Host	Rabbit
Reactivity	Human, Mouse
Conjugation	Unconjugated
Tested Applications	ELISA, IF, IHC, WB
Immunogen	DNA - binding Protein antibody was raised against mouse DNA - binding Protein (Mouse).
Target	RREB1
Preservatives	0.02 M potassium phosphate, 0.15 M sodium chloride, pH 7.2, 0.01% sodium azide.
Form/Appearance	Liquid
Concentration	1 mg/ml
Storage	Short term: 4°C. Long term: Store at -20°C. Avoid freeze-thaw cycles.
Note	For research use only
Application notes	DNA-binding Protein antibody can be used in ELISA starting at 1:000 - 1:1000, and immunohistochemistry starting at 5 µg/mL.
Clonality	Polyclonal
Uniprot ID	Q92766
NCBI	Q92766
Dilution Range	DNA-binding Protein antibody can be used in ELISA starting at 1:000 - 1:1000, and immunohistochemistry starting at 5 µg/mL.
Expiration Date	12 months from date of receipt.



Immunohistochemistry staining of DNA-bin...