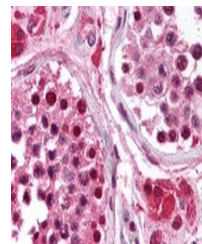


## Product Datasheet

### RPA3 Antibody (orb1250399)

<b>Description</b>	RPA3 Antibody
<b>Species/Host</b>	Mouse
<b>Reactivity</b>	Human, Mouse
<b>Conjugation</b>	Unconjugated
<b>Tested Applications</b>	IHC, IP, WB
<b>Immunogen</b>	Replication Protein A3 monoclonal antibody was raised against full length Replication Protein A3 expressed in E. coli (Human).
<b>Target</b>	RPA3
<b>Preservatives</b>	PBS.
<b>Form/Appearance</b>	Liquid
<b>Concentration</b>	1 mg/ml
<b>Storage</b>	Short term: 4°C. Long term: Store at -20°C. Avoid freeze-thaw cycles.
<b>Note</b>	For research use only
<b>Application notes</b>	Replication Protein A3 antibody can be used in ELISA, Western Blot starting at 1:500 - 1:1000, and immunohistochemistry starting at 5 µg/mL.
<b>Isotype</b>	IgG1
<b>Clonality</b>	Monoclonal
<b>Uniprot ID</b>	<a href="#">P35244</a>
<b>NCBI</b>	<a href="#">P35244</a>
<b>Dilution Range</b>	Replication Protein A3 antibody can be used in ELISA, Western Blot starting at 1:500 - 1:1000, and immunohistochemistry starting at 5 µg/mL.
<b>Expiration Date</b>	12 months from date of receipt.



Immunohistochemistry staining of Replica...