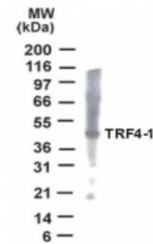


## Product Datasheet

### PAPD7 Antibody (orb1250338)

<b>Description</b>	PAPD7 Antibody
<b>Species/Host</b>	Rabbit
<b>Reactivity</b>	Gorilla, Human, Monkey, Primate
<b>Conjugation</b>	Unconjugated
<b>Tested Applications</b>	IHC, WB
<b>Immunogen</b>	POLS antibody was raised against amino acids 447 - 462 of POLS (Human).
<b>Target</b>	PAPD7
<b>Preservatives</b>	PBS, 0.05% sodium azide.
<b>Form/Appearance</b>	Liquid
<b>Concentration</b>	1 mg/ml
<b>Storage</b>	POLS antibody can be stored short term 4 °C. For long term storage aliquot and store at -20 °C. As with all antibodies avoid freeze/thaw cycles.
<b>Note</b>	For research use only
<b>Application notes</b>	POLS antibody can be used in ELISA, Western Blot starting at 1:500 - 1:1000, and immunohistochemistry starting at 5 µg/mL.
<b>Isotype</b>	IgG
<b>Clonality</b>	Polyclonal
<b>Uniprot ID</b>	<a href="#">Q5XG87</a>
<b>NCBI</b>	<a href="#">Q5XG87</a>
<b>Dilution Range</b>	POLS antibody can be used in ELISA, Western Blot starting at 1:500 - 1:1000, and immunohistochemistry starting at 5 µg/mL.
<b>Expiration Date</b>	12 months from date of receipt.



Western blot analysis of POLS in HeLa ce...