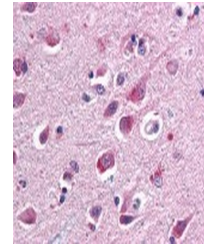


## Product Datasheet

### SARM1 Antibody (orb1250310)

<b>Description</b>	SARM1 Antibody
<b>Species/Host</b>	Mouse
<b>Reactivity</b>	Human
<b>Conjugation</b>	Unconjugated
<b>Tested Applications</b>	IHC, IP
<b>Target</b>	SARM1
<b>Preservatives</b>	PBS, 10% glycerol, 0.02% sodium azide.
<b>Form/Appearance</b>	Liquid
<b>Concentration</b>	1 mg/ml
<b>Storage</b>	Short term: +4°C; Long term: -70°C.
<b>Note</b>	For research use only
<b>Application notes</b>	SARM1 antibody can be used in ELISA, Western Blot, and immunohistochemistry starting at 5 µg/mL.
<b>Isotype</b>	IgG2b
<b>Clonality</b>	Monoclonal
<b>Uniprot ID</b>	<a href="#">Q6SZW1</a>
<b>NCBI</b>	<a href="#">Q6SZW1</a>
<b>Dilution Range</b>	SARM1 antibody can be used in ELISA, Western Blot, and immunohistochemistry starting at 5 µg/mL.
<b>Expiration Date</b>	12 months from date of receipt.



Immunohistochemistry staining of SARM1 i...