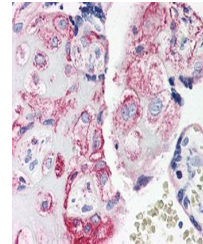


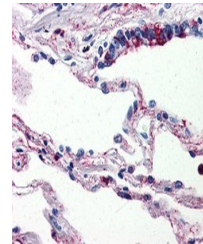
Product Datasheet

C5AR1 Antibody (orb1250262)

Description	C5AR1 Antibody
Species/Host	Rabbit
Reactivity	Gorilla, Human, Monkey, Primate
Conjugation	Unconjugated
Tested Applications	IHC
Immunogen	C5AR1 antibody was raised against a KLH conjugated synthetic peptide of Synthetic peptide - KLH conjugatedC5AR1.
Target	C5AR1
Preservatives	PBS, 0.1% sodium azide.
Form/Appearance	Liquid
Concentration	1 mg/ml
Storage	C5AR1 antibody should be stored long term (months) at -80 °C and short term (days) at 4 °C. As with all antibodies avoid freeze/thaw cycles.
Note	For research use only
Application notes	C5AR1 antibody can be used in Western Blot starting at 1 µg/mL, immunohistochemistry in frozen tissues starting at 1 µg/mL, and immunocytochemistry.
Clonality	Polyclonal
Uniprot ID	P21730
NCBI	P21730
Dilution Range	C5AR1 antibody can be used in Western Blot starting at 1 µg/mL, immunohistochemistry in frozen tissues starting at 1 µg/mL, and immunocytochemistry.
Expiration Date	12 months from date of receipt.



Immunohistochemistry staining of C5AR1 i...



Immunohistochemistry staining of C5AR1 i...