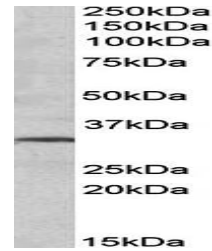


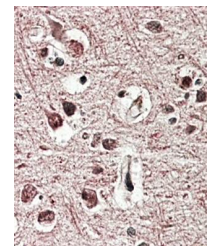
## Product Datasheet

### GRM2 antibody (orb125026)

<b>Description</b>	Goat polyclonal antibody to GRM2
<b>Species/Host</b>	Goat
<b>Reactivity</b>	Bovine, Canine, Human, Mouse, Rat
<b>Conjugation</b>	Unconjugated
<b>Tested Applications</b>	ELISA, IHC, WB
<b>Target</b>	GRM2
<b>Preservatives</b>	Supplied at 0.5 mg/ml in Tris saline, 0.02% sodium azide, pH 7.3 with 0.5% bovine serum albumin. Aliquot and store at -20°C. Minimize freezing and thawing.
<b>Storage</b>	Aliquot and store at -20°C. Minimize freezing and thawing.
<b>Note</b>	For research use only
<b>Application notes</b>	IHC: In paraffin embedded Human Cerebral Cortex shows membranous/axonal staining. Recommended concentration, 3-5µg/ml.
<b>Protein Sequence</b>	KETAPERREV
<b>Clonality</b>	Polyclonal
<b>MW</b>	95.6; 27.5
<b>Entrez</b>	<a href="#">2912</a>
<b>Dilution Range</b>	ELISA: 1:16000, WB: 1-3 µg/ml, IHC-P: 3-5µg/ml
<b>Expiration Date</b>	12 months from date of receipt.



Western blot analysis of human Hippocamp...



Immunohistochemical analysis of formalin...