

---

## Product Datasheet

### Mast Cell Chymase antibody (orb125014)

**Description**

Goat polyclonal antibody to CMA1

**Species/Host**

Goat

**Reactivity**

Human

**Conjugation**

Unconjugated

**Tested**

ELISA, IHC, WB

**Applications**
**Target**

CMA1

**Preservatives**

Supplied at 0.5 mg/ml in Tris saline, 0.02% sodium azide, pH 7.3 with 0.5% bovine serum albumin. Aliquot and store at -20°C. Minimize freezing and thawing.

**Storage**

Aliquot and store at -20°C. Minimize freezing and thawing.

**Note**

For research use only

**Application notes**

WB: In transfected HEK293 transiently expressing full-length Human CMA1 (myc and DYKDDDDK tagged), a band of approx. 35kDa was observed. No bands were observed in mock-transfected HEK293 and the same band was observed using anti-DYKDDDDK tag antibody. Recomm. IHC: Paraffin embedded Human Testis and Tonsil (Mast cells). Recommended concentration: 1.5µg/ml.. Notes: Purchase the +ve control! The transfected lysate used to QC this product is available for sale. Please email [sales@everestbiotech.com](mailto:sales@everestbiotech.com) to request datasheet, pricing and delivery information.

**Protein Sequence**

QFRHPKYNTSTLHHD

**Clonality**

Polyclonal

**MW**

27.3

**Entrez**

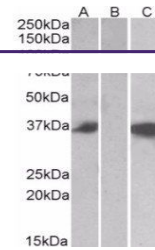
1215

**Dilution Range**

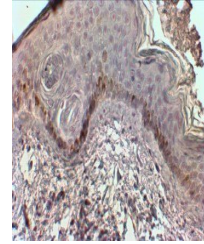
ELISA: 1:128000, WB: 0.5-1 µg/ml, IHC-P: 1.5 µg/ml

**Expiration Date**

12 months from date of receipt.



Western blot analysis of HEK293 lysate u...



Immunohistochemical staining of Human Sk...