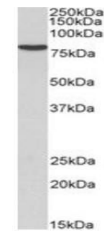


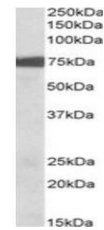
## Product Datasheet

### RPS6KA2 antibody (orb125012)

<b>Description</b>	Goat polyclonal antibody to RPS6KA2
<b>Species/Host</b>	Goat
<b>Reactivity</b>	Equine, Human, Mouse, Rat
<b>Conjugation</b>	Unconjugated
<b>Tested Applications</b>	ELISA, WB
<b>Target</b>	RPS6KA2
<b>Preservatives</b>	Supplied at 0.5 mg/ml in Tris saline, 0.02% sodium azide, pH 7.3 with 0.5% bovine serum albumin. Aliquot and store at -20°C. Minimize freezing and thawing.
<b>Storage</b>	Aliquot and store at -20°C. Minimize freezing and thawing.
<b>Note</b>	For research use only
<b>Application notes</b>	WB: Approx 75kDa band observed in Rat Lung lysates (calculated MW of 83.2kDa according to Rat NP_476469.11). Recommended concentration: 0.01-0.03µg/ml.
<b>Protein Sequence</b>	EYLSPNQLSRQDVH
<b>Clonality</b>	Polyclonal
<b>MW</b>	83.2; 84.0
<b>Entrez</b>	<b>6196</b>
<b>Dilution Range</b>	ELISA: 1:64000, WB: 0.01-0.03 µg/ml
<b>Expiration Date</b>	12 months from date of receipt.



Western blot analysis of Rat Lung lysate...



Western blot analysis of Mouse Lung lysa...