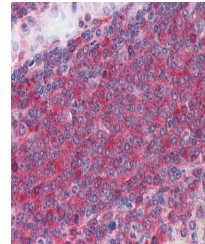


Product Datasheet

Camk2d Antibody (orb1250080)

Description	Camk2d Antibody
Species/Host	Rabbit
Reactivity	Frog, Human, Mouse, Rat
Conjugation	Unconjugated
Tested Applications	IHC, WB
Immunogen	CAMK2 antibody was raised against a phosphopeptide corresponding to amino acid residues surrounding the phosphoThr286 found in rat brain CAMK2 (Rat).
Target	Camk2d
Preservatives	10 mM HEPES (pH 7.5), 150 mM NaCl, 100 ug per ml rAlbumin, 50% glycerol
Form/Appearance	Liquid
Concentration	batch dependent
Storage	Store CAMK2 antibody at 4 °C or -20 °C. As with all antibodies avoid freeze/thaw cycles.
Note	For research use only
Application notes	CAMK2 antibody can be used in ELISA, Western Blot, and immunohistochemistry starting at 5 µg/mL.
Clonality	Polyclonal
Uniprot ID	P15791
NCBI	P15791
Dilution Range	CAMK2 antibody can be used in ELISA, Western Blot, and immunohistochemistry starting at 5 µg/mL.
Expiration Date	12 months from date of receipt.



Immunohistochemistry staining of CAMK2 i...