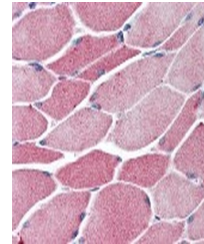


Product Datasheet

BACH1 Antibody (orb1249779)

Description	BACH1 Antibody
Species/Host	Rabbit
Reactivity	Human
Conjugation	Unconjugated
Tested Applications	ELISA, IF, IHC, WB
Immunogen	BACH1 antibody was raised against amino acids 92-104 of BACH1 (Human).
Target	BACH1
Preservatives	0.02 M potassium phosphate, 0.15 M sodium chloride, pH 7.2, 0.01% sodium azide.
Form/Appearance	Liquid
Concentration	1 mg/ml
Storage	Short term: 4°C. Long term: Store at -20°C. Avoid freeze-thaw cycles.
Note	For research use only
Application notes	BACH1 antibody can be used in ELISA starting at 1:10000 - 1:50000, Western Blot starting at 1:1000 - 1:2500, and immunohistochemistry starting at 5 µg/mL.
Clonality	Polyclonal
Uniprot ID	O14867
NCBI	O14867
Dilution Range	BACH1 antibody can be used in ELISA starting at 1:10000 - 1:50000, Western Blot starting at 1:1000 - 1:2500, and immunohistochemistry starting at 5 µg/mL.
Expiration Date	12 months from date of receipt.



Immunohistochemistry staining of BACH1 i...