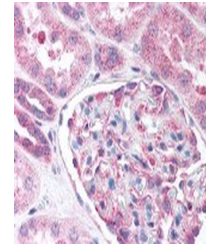


Product Datasheet

NES Antibody (orb1249755)

Description	NES Antibody
Species/Host	Rabbit
Reactivity	Human, Mouse
Conjugation	Unconjugated
Tested Applications	ELISA, IF, IHC, WB
Immunogen	Nestin antibody was raised against amino acids 1484 - 1500 of Nestin (Human).
Target	NES
Preservatives	0.02 M potassium phosphate, 0.15 M sodium chloride, pH 7.2, 0.01% sodium azide.
Form/Appearance	Liquid
Concentration	1 mg/ml
Storage	Short term: 4°C. Long term: Store at -20°C. Avoid freeze-thaw cycles.
Note	For research use only
Application notes	Nestin antibody can be used in ELISA starting at 1:1000 - 1:6000, Western Blot, and immunohistochemistry starting at 5 µg/mL.
Clonality	Polyclonal
Uniprot ID	P48681
NCBI	P48681
Dilution Range	Nestin antibody can be used in ELISA starting at 1:1000 - 1:6000, Western Blot, and immunohistochemistry starting at 5 µg/mL.
Expiration Date	12 months from date of receipt.



Immunohistochemistry staining of Nestin ...