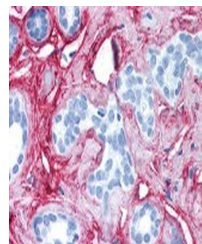


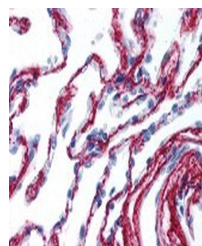
Product Datasheet

COL6A1 Antibody (orb1249754)

Description	COL6A1 Antibody
Species/Host	Rabbit
Reactivity	Bovine, Human
Conjugation	Unconjugated
Tested Applications	ELISA, IF, IHC, IP, WB
Immunogen	COL6A1 antibody was raised against Collagen Type VI from human and bovine placenta (Human).
Target	COL6A1
Preservatives	0.125 M sodium borate, 0.075 M sodium chloride, 0.005 M EDTA;, pH 8.0, 0.01% sodium azide.
Form/Appearance	Liquid
Concentration	1 mg/ml
Storage	Short term: 4°C. Long term: Store at -20°C. Avoid freeze-thaw cycles.
Note	For research use only
Application notes	COL6A1 antibody can be used in immunohistochemistry starting at 1.25 - 2.5 µg/mL.
Clonality	Polyclonal
Uniprot ID	P12109
NCBI	P12109
Dilution Range	COL6A1 antibody can be used in immunohistochemistry starting at 1.25 - 2.5 µg/mL.
Expiration Date	12 months from date of receipt.



Immunohistochemistry staining of COL6A1 ...



Immunohistochemistry staining of COL6A1 ...