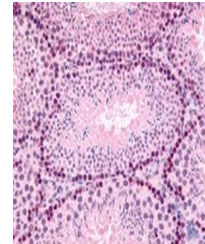


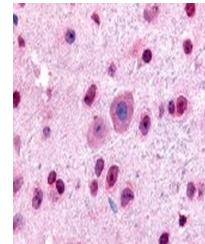
Product Datasheet

GLI2 Antibody (orb1249749)

Description	GLI2 Antibody
Species/Host	Rabbit
Reactivity	Mouse
Conjugation	Unconjugated
Tested Applications	ELISA, IHC, WB
Immunogen	GLI2 antibody was raised against amino acids from an internal region of GLI2 (Mouse).
Target	GLI2
Preservatives	0.02 M potassium phosphate, 0.15 M sodium chloride, pH 7.2, 0.01% sodium azide.
Form/Appearance	Liquid
Concentration	1 mg/ml
Storage	Short term: 4°C. Long term: Store at -20°C. Avoid freeze-thaw cycles.
Note	For research use only
Application notes	GLI2 antibody can be used in ELISA starting at 1:000 - 1:1000, and immunohistochemistry starting at 5 µg/mL.
Clonality	Polyclonal
Uniprot ID	P10070
NCBI	P10070
Dilution Range	GLI2 antibody can be used in ELISA starting at 1:000 - 1:1000, and immunohistochemistry starting at 5 µg/mL.
Expiration Date	12 months from date of receipt.



Immunohistochemistry staining of GLI2 in...



Immunohistochemistry staining of GLI2 in...