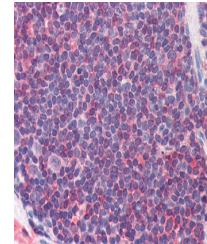


## Product Datasheet

### IL7R Antibody (orb1249740)

<b>Description</b>	IL7R Antibody
<b>Species/Host</b>	Rabbit
<b>Reactivity</b>	Human, Mouse, Rat
<b>Conjugation</b>	Unconjugated
<b>Tested Applications</b>	ELISA, IHC, WB
<b>Immunogen</b>	PCNA antibody was raised against a synthetic phospho peptide corresponding to the C-Terminus of human PCNA (Human).
<b>Target</b>	IL7R
<b>Preservatives</b>	0.02 M potassium phosphate, 0.15 M sodium chloride, pH 7.2, 0.01% sodium azide.
<b>Form/Appearance</b>	Liquid
<b>Concentration</b>	0.93 mg/ml
<b>Storage</b>	Store IL-7 Receptor antibody at 4 °C or -20 °C. As with all antibodies avoid freeze/thaw cycles.
<b>Note</b>	For research use only
<b>Application notes</b>	IL-7 Receptor antibody can be used in ELISA starting at 1:000 - 1:1000, and immunohistochemistry starting at 10 µg/mL.
<b>Clonality</b>	Polyclonal
<b>Uniprot ID</b>	<a href="#">P16871</a>
<b>NCBI</b>	<a href="#">P16871</a>
<b>Dilution Range</b>	IL-7 Receptor antibody can be used in ELISA starting at 1:000 - 1:1000, and immunohistochemistry starting at 10 µg/mL.
<b>Expiration Date</b>	12 months from date of receipt.



Immunohistochemistry staining of IL-7 Re...