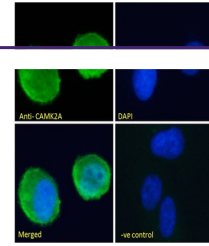
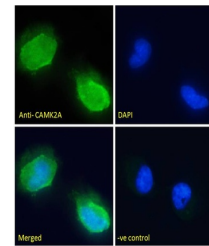

Product Datasheet

CAMK2A Antibody (orb1249621)

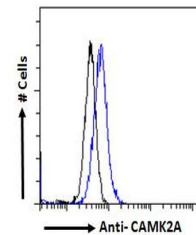
Description	CAMK2A Antibody
Species/Host	Goat
Reactivity	Human, Mouse, Rat
Conjugation	Unconjugated
Tested Applications	ELISA, FC, IF, IHC, WB
Immunogen	The immunogen for this antibody is: C-PRTAQSEETRVWHR
Target	CAMK2A
Preservatives	Supplied at 0.5 mg/ml in Tris saline, 0.02% sodium azide, pH 7.3 with 0.5% bovine serum albumin. Aliquot and store at -20°C. Minimize freezing and thawing.
Form/Appearance	Liquid
Concentration	500 ug/mL
Storage	Aliquot and store at -20°C. Minimize freezing and thawing.
Note	For research use only
Application notes	Peptide ELISA: antibody detection limit dilution 1:64000. Western Blot: Approx 58-60kDa band observed in Human (Cerebellum), Mouse and Rat Brain lysates (calculated MW of 55.3kDa according to Human NP_057065.2, and 54.1kDa according to Mouse NP_803126.1 and Rat NP_037052.1). An additional band of 50kDa was observed in some Rat Brain lysates and was successfully blocked by incubation with the immunizing peptide. The observed molecular weights correspond to earlier findings with different antibodies from other commercial sources. Recommended concentration: 0.03--0.3ug/ml. Primary incubation 1 hour at room temperature. Immunohistochemistry: In paraffin embedded Human Brain Cortex shows granular staining in the periphery of pyramidal cell bodies. Recommended concentration: 3-6ug/ml. Paraffin embedded Human Adrenal Gland. Recommended concentration: 3.75ug/ml. Immunofluorescence: Strong expression of the protein seen in the membranes of U2OS and U251 cells. Recommended concentration: 10ug/ml. Flow Cytometry: Flow cytometric analysis of Kelly cells. Recommended concentration: 10ug/ml.
Clonality	Polyclonal
Uniprot ID	Q9UQM7
NCBI	NP_741960.1 , NP_057065.2



orb1249621 (3.8 ug/ml) staining of paraf...



orb1249621 (3.75 ug/ml) staining of para...



orb1249621 Immunofluorescence analysis o...