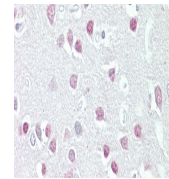

Product Datasheet

TREX2 Antibody (orb1249597)

Description	TREX2 Antibody
Species/Host	Goat
Reactivity	Human
Conjugation	Unconjugated
Tested Applications	ELISA, IHC
Immunogen	The immunogen for this antibody is: C-HRSSLENPEHDES
Target	TREX2
Preservatives	Supplied at 0.5 mg/ml in Tris saline, 0.02% sodium azide, pH 7.3 with 0.5% bovine serum albumin. Aliquot and store at -20°C. Minimize freezing and thawing.
Form/Appearance	Liquid
Concentration	500 ug/mL
Storage	Aliquot and store at -20°C. Minimize freezing and thawing.
Note	For research use only
Application notes	<p>Peptide ELISA: antibody detection limit dilution 1:128000. Western Blot: Preliminary experiments gave an approx 18kDa band in lysates of Jurkat, MOLT4 and U937 after 0.5ug/ml antibody staining. Please note that currently we cannot find an explanation in the literature for the band we observe given the calculated size of 25.9kDa according to NP_542432.2. The 18kDa band was successfully blocked by incubation with the immunizing peptide. We would appreciate any feedback from people in the field - have any results been reported with other antibodies/lysates? Have any further splice variants/modified forms been reported?</p> <p>Immunohistochemistry: In paraffin embedded Human Breast shows nuclear staining in the luminal epithelial duct cells. Recommended concentration, 3-6ug/ml.</p>
Clonality	Polyclonal
Uniprot ID	Q9BQ50
NCBI	NP_542432.2
Dilution Range	<p>Peptide ELISA: antibody detection limit dilution 1:128000. Western Blot: Preliminary experiments gave an approx 18kDa band in lysates of Jurkat, MOLT4 and U937 after 0.5ug/ml antibody staining. Please note that currently we cannot find an explanation in the literature for the band we observe given the calculated size of 25.9kDa according to NP_542432.2. The 18kDa band was successfully blocked by incubation with the immunizing peptide. We would</p>



orb1249597
(3.8 ug/ml)
staining of
paraf...