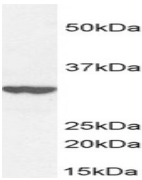
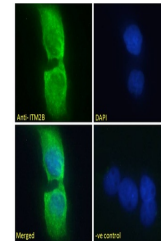

Product Datasheet

WIZ Antibody (orb1249561)

Description	WIZ Antibody
Species/Host	Goat
Reactivity	Human
Conjugation	Unconjugated
Tested Applications	ELISA, FC, WB
Immunogen	The immunogen for this antibody is: C-RSYIQGGRPFKKFR
Target	WIZ
Preservatives	Supplied at 0.5 mg/ml in Tris saline, 0.02% sodium azide, pH 7.3 with 0.5% bovine serum albumin. Aliquot and store at -20°C. Minimize freezing and thawing.
Form/Appearance	Liquid
Concentration	500 ug/mL
Storage	Aliquot and store at -20°C. Minimize freezing and thawing.
Note	For research use only
Application notes	Peptide ELISA: antibody detection limit dilution 1:2000. Western Blot: Approx 75kDa band observed in Human Brain (Cerebellum) lysates (calculated MW of 85.4kDa according to NP_067064.2). An additional band of unknown identity was also consistently observed at 38kDa. This band was successfully blocked by incubation with the immunizing peptide. Recommended concentration: 0.3-1ug/ml. Primary incubation 1 hour at room temperature. Flow Cytometry: Flow cytometric analysis of HeLa cells. Recommended concentration: 10ug/ml.
Clonality	Polyclonal
Uniprot ID	O95785
NCBI	NP_001317324.1 , NP_067064.2
Dilution Range	Peptide ELISA: antibody detection limit dilution 1:2000. Western Blot: Approx 75kDa band observed in Human Brain (Cerebellum) lysates (calculated MW of 85.4kDa according to NP_067064.2). An additional band of unknown identity was also consistently observed at 38kDa. This band was successfully blocked by incubation with the immunizing peptide. Recommended concentration: 0.3-1ug/ml. Primary incubation 1 hour at room temperature. Flow Cytometry: Flow cytometric analysis of HeLa cells. Recommended concentration: 10ug/ml.
Expiration Date	12 months from date of receipt.

orb1249561
(1 ug/ml)
staining of
Human C...



orb1249561
Flow
cytometric
analysis of
p...