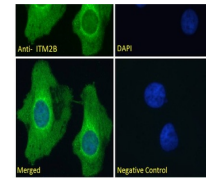
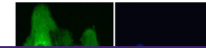
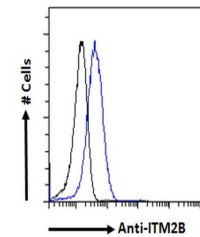

Product Datasheet

ITM2B Antibody (orb1249554)

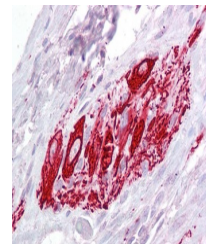
Description	ITM2B Antibody
Species/Host	Goat
Reactivity	Human
Conjugation	Unconjugated
Tested Applications	ELISA, FC, IF, IHC, WB
Immunogen	The immunogen for this antibody is: C-HDKETYKLQRRETIK
Target	ITM2B
Preservatives	Supplied at 0.5 mg/ml in Tris saline, 0.02% sodium azide, pH 7.3 with 0.5% bovine serum albumin. Aliquot and store at -20°C. Minimize freezing and thawing.
Form/Appearance	Liquid
Concentration	500 ug/mL
Storage	Aliquot and store at -20°C. Minimize freezing and thawing.
Note	For research use only
Application notes	Peptide ELISA: antibody detection limit dilution 1:8000.Western Blot:Approx. 30-35kDa band observed in HepG2 cell lysates (calculated MW of 30.3kDa according to NP_068839.1). Recommended concentration: 0.1-0.3ug/ml. Primary incubation 1 hour at room temperature. Preliminary testing was unsuccessful on Rat and Mouse Brain for this particular batch.Immunohistochemistry:Paraffin embedded Human Small Intestine. Recommended concentration: 2.5ug/ml.Immunofluorescence: Strong expression of the protein seen in the cytoplasm and Golgi apparatus of A431 and HeLa cells. Recommended concentration: 10ug/ml. Flow Cytometry: Flow cytometric analysis of HeLa cells. Recommended concentration: 10ug/ml.
Clonality	Polyclonal
Uniprot ID	Q9Y287
NCBI	NP_068839.1
Dilution Range	Peptide ELISA: antibody detection limit dilution 1:8000.Western Blot:Approx. 30-35kDa band observed in HepG2 cell lysates (calculated MW of 30.3kDa according to NP_068839.1). Recommended concentration: 0.1-0.3ug/ml. Primary incubation 1 hour at room temperature. Preliminary testing was unsuccessful on Rat and Mouse Brain for this particular batch.Immunohistochemistry:Paraffin embedded Human



orb1249554 (0.3 ug/ml) staining of HepG2...



orb1249554 Immunofluorescence analysis o...



orb1249554 Immunofluorescence analysis o...