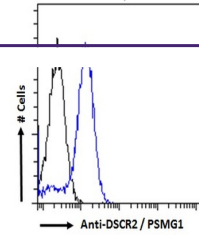
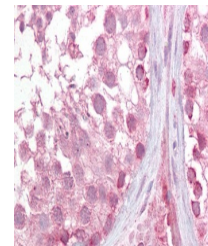

Product Datasheet

PSMG1 Antibody (orb1249550)

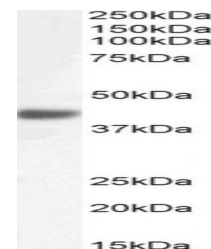
Description	PSMG1 Antibody
Species/Host	Goat
Reactivity	Human
Conjugation	Unconjugated
Tested Applications	ELISA, FC, IF
Immunogen	The immunogen for this antibody is: C-KLMTTNEIQSNIYT
Target	PSMG1
Preservatives	Supplied at 0.5 mg/ml in Tris saline, 0.02% sodium azide, pH 7.3 with 0.5% bovine serum albumin. Aliquot and store at -20°C. Minimize freezing and thawing.
Form/Appearance	Liquid
Concentration	500 ug/mL
Storage	Aliquot and store at -20°C. Minimize freezing and thawing.
Note	For research use only
Application notes	Peptide ELISA: antibody detection limit dilution 1:64000. Immunofluorescence: Strong expression of the protein seen in the cytoplasm and Golgi apparatus of A431 and U2OS cells. Recommended concentration: 10ug/ml. Flow Cytometry: Flow cytometric analysis of Jurkat cells. Recommended concentration: 10ug/ml.
Clonality	Polyclonal
Uniprot ID	O95456
NCBI	NP_001248753.1 , NP_982257.1 , NP_003711.1 , NP_001307724.1
Dilution Range	Peptide ELISA: antibody detection limit dilution 1:64000. Immunofluorescence: Strong expression of the protein seen in the cytoplasm and Golgi apparatus of A431 and U2OS cells. Recommended concentration: 10ug/ml. Flow Cytometry: Flow cytometric analysis of Jurkat cells. Recommended concentration: 10ug/ml.
Expiration Date	12 months from date of receipt.



orb1249550
Immunofluorescence
analysis o...



orb1249550
Immunofluorescence
analysis o...



orb1249550 Flow
cytometric analysis
of p...